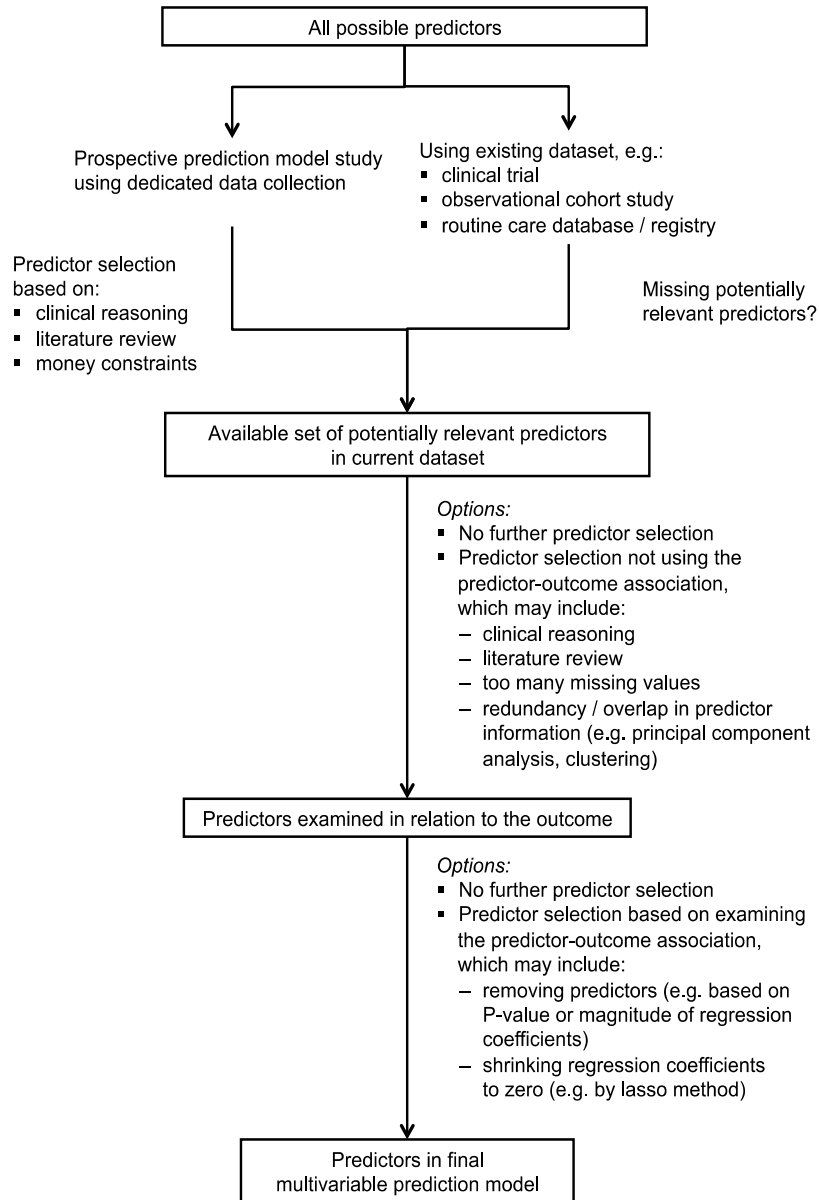


TRIPOD Errata

Date	Paper	Page	Erratum
09/02/2015	Collins et al (Ann Intern Med 2015) Moons et al (Ann Intern Med 2015)	checklist	Item 7a: 'Clearly define all predictors used in developing the multivariable prediction model, including how and when they were measured' was reworded to 'Clearly define all predictors used in developing or validating the multivariable prediction model, including how and when they were measured.' This Website contains the correct checklist.
18/01/2016	Moons et al (Ann Intern Med 2015)	W47	Missing intercept β_0 in the formula, the formula should read probability = $\exp(\beta_0 + \beta_1 X_1 + \beta_x X_2 + \dots + \beta_k X_k) / (1 + \exp(\beta_0 + \beta_1 X_1 + \beta_x X_2 + \dots + \beta_k X_k))$ = $1 / (1 + \exp(-(\beta_0 + \beta_1 X_1 + \beta_x X_2 + \dots + \beta_k X_k)))$
18/01/2016	Moons et al (Ann Intern Med 2015)	W19	Last line of paragraph starting 'For diagnostic models, the outcome is the presence...', should read 'Reference standard tests may be laboratory, radiology, arthroscopy, or pathology assessments'.
18/01/2016	Moons et al (Ann Intern Med 2015)	W14	Figure 2 has been updated (see below) 'Corrected Figure 2'

Updated Figure

Corrected Figure 2. Selection of predictors in a study developing a multivariable prediction model.



TRIPOD Errata